

JUPITER COUNTRY CLUB POD D REPLAT

A PLANNED UNIT DEVELOPMENT, BEING A REPLAT OF POD D, JUPITER COUNTRY CLUB, ACCORDING TO THE PLAT THEREOF, AS RECORDED IN PLAT BOOK 108, PAGES 164 THROUGH 181 OF THE PUBLIC RECORDS OF PALM BEACH COUNTY, FLORIDA, LYING IN SECTION 8, TOWNSHIP 41 SOUTH, RANGE 42 EAST, TOWN OF JUPITER, PALM BEACH COUNTY, FLORIDA

THIS INSTRUMENT PREPARED BY
 DAVID P. LINDLEY
 OF
CAULFIELD and WHEELER, INC.
 SURVEYORS - ENGINEERS - PLANNERS
 7301-A WEST PALMETTO PARK ROAD, SUITE 100A
 BOCA RATON, FLORIDA 33433 - (561)392-1991
 APRIL - 2015

145

STATE OF FLORIDA
 COUNTY OF PALM BEACH
 THIS PLAT WAS FILED FOR
 RECORD AT _____ M.
 THIS _____ DAY OF _____
 A.D. 2015 AND DULY RECORDED
 IN PLAT BOOK _____ ON
 PAGES _____ AND _____

SHARON R. BOCK
 CLERK AND COMPTROLLER

BY: _____
 DEPUTY CLERK

SHEET 3 OF 3

MATCH LINE
 SHEET 2 OF 3

MATCH LINE
 SHEET 2 OF 3

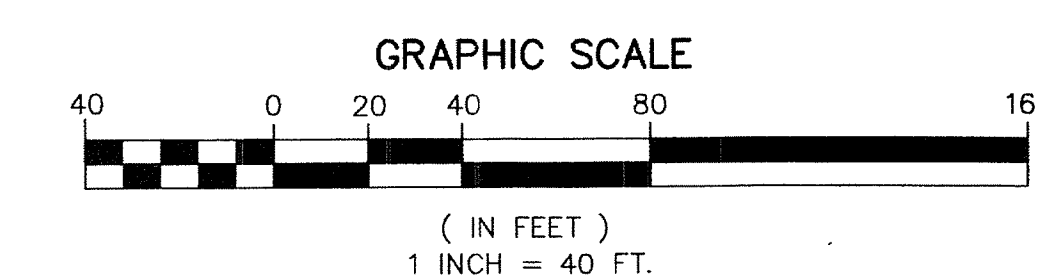
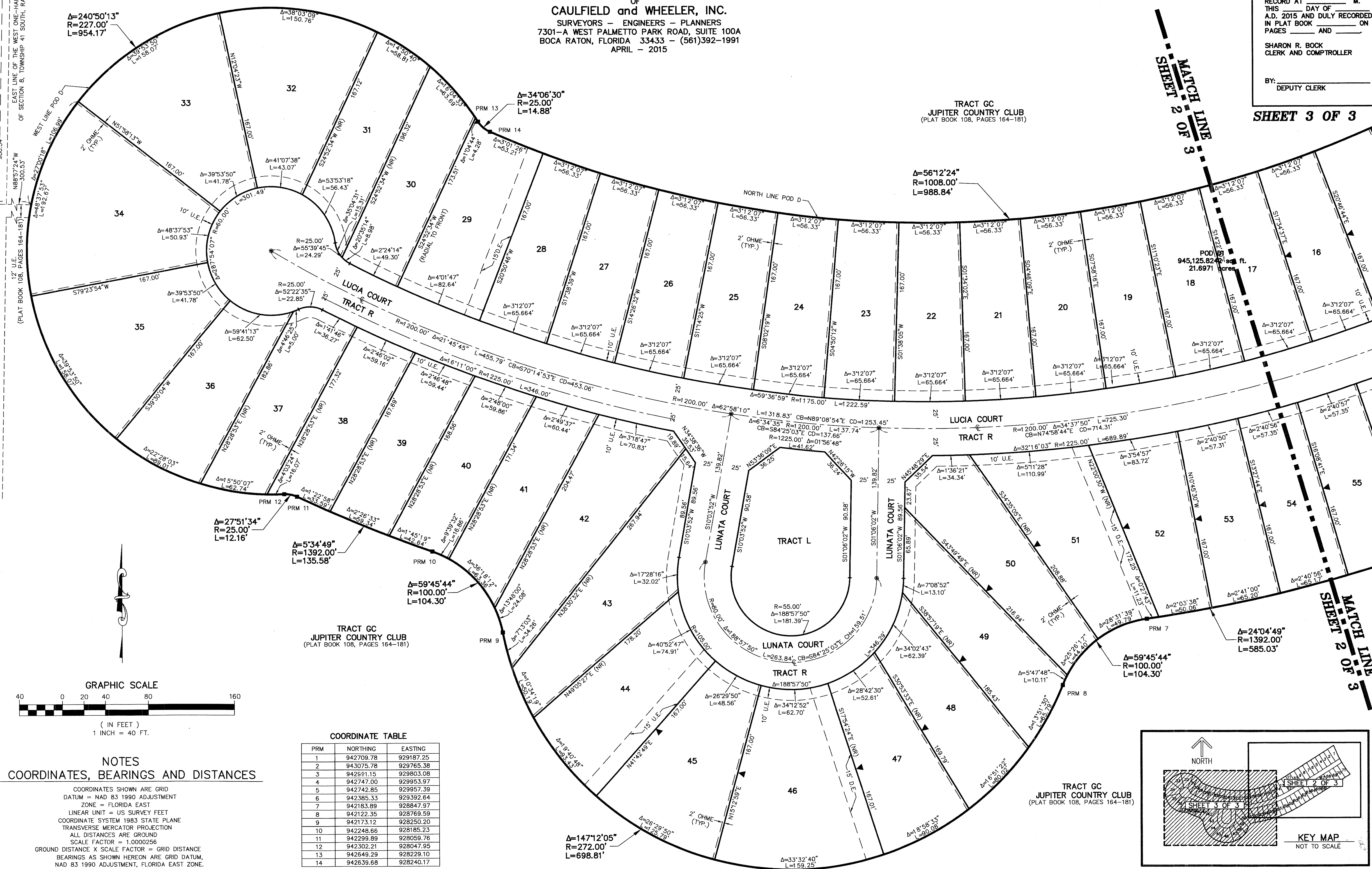
S.W. CORNER OF THE S.E.
 ONE-QUARTER (1/4)
 OF SECTION 5, TOWNSHIP
 41 SOUTH, RANGE 42 EAST
 NOT FOUND (PLAT)

TRACT GC
 JUPITER COUNTRY CLUB
 (PLAT BOOK 108, PAGES 164-181)

TRACT GC
 JUPITER COUNTRY CLUB
 (PLAT BOOK 108, PAGES 164-181)

TRACT GC
 JUPITER COUNTRY CLUB
 (PLAT BOOK 108, PAGES 164-181)

TRACT GC
 JUPITER COUNTRY CLUB
 (PLAT BOOK 108, PAGES 164-181)



**NOTES
 COORDINATES, BEARINGS AND DISTANCES**

COORDINATES SHOWN ARE GRID
 DATUM = NAD 83 1990 ADJUSTMENT
 ZONE = FLORIDA EAST
 LINEAR UNIT = US SURVEY FEET
 COORDINATE SYSTEM 1983 STATE PLANE
 TRANSVERSE MERCATOR PROJECTION
 ALL DISTANCES ARE GROUND
 SCALE FACTOR = 1.0000256
 GROUND DISTANCE X SCALE FACTOR = GRID DISTANCE
 BEARINGS AS SHOWN HEREON ARE GRID DATUM,
 NAD 83 1990 ADJUSTMENT, FLORIDA EAST ZONE.

COORDINATE TABLE

PRM	NORTHING	EASTING
1	942709.78	929167.25
2	943075.78	929765.38
3	942991.15	929803.08
4	942747.00	929953.97
5	942742.85	929957.39
6	942385.33	929392.64
7	942183.89	928847.97
8	942122.35	928769.59
9	942173.12	928250.20
10	942248.66	928185.23
11	942299.89	928059.76
12	942302.21	928047.95
13	942649.29	928229.10
14	942639.68	928240.17

